

Lower American River Task Force



WATER
FORUM

20 YEARS

September 12, 2023

1:00-3:00

<https://www.waterforum.org/the-river/lar-task-force/>

Checklist for Virtual Participation



- ✓ **If you have less than optimal internet connection, join through both a phone (for audio) and your computer (for video).** You may do so by joining the online meeting via the Zoom link and opting to join via phone audio. When you are dialing in, please be sure to enter your participant ID.
- ✓ **Please mute yourself when you are not speaking.** This helps cut down on background noise.
- ✓ **We encourage you to join via video.** Seeing each other's faces makes for a more engaging experience.

Introduction to Zoom Controls

The screenshot displays a Zoom Meeting window with a dark background. In the center, the word "Participant" is written in large white font. At the bottom, there is a toolbar with several icons: Unmute (muted), Start Video (video off), Participants (1), Chat, Share Screen, Record, Reactions, and Leave. A "Raise Hand" menu is open, showing options: Yes (green checkmark), No (red X), Slower (left arrow), and Faster (right arrow). The right sidebar contains a "Participants (1)" list with "Participant (me)" and icons for mute and video. Below this are buttons for "Invite", "Unmute Me", and "Claim Host". The "Chat" section is empty, with a "To: Everyone" header and a "Type message here..." input field. A "File" button and a three-dot menu are also visible in the chat area.



CAT

Lower American River Task Force Welcome

Jessica Law, Water Forum & Gary Bardini, SAFCA

Introductions and Agenda Review

Sophie Carrillo-Mandel, CBI

Lower American River Conditions

Levi Johnson, Bureau of Reclamation



— BUREAU OF —
RECLAMATION

WY 2023 Ops Update

Lower American River
Task Force

September 12, 2023

Central Valley Operations



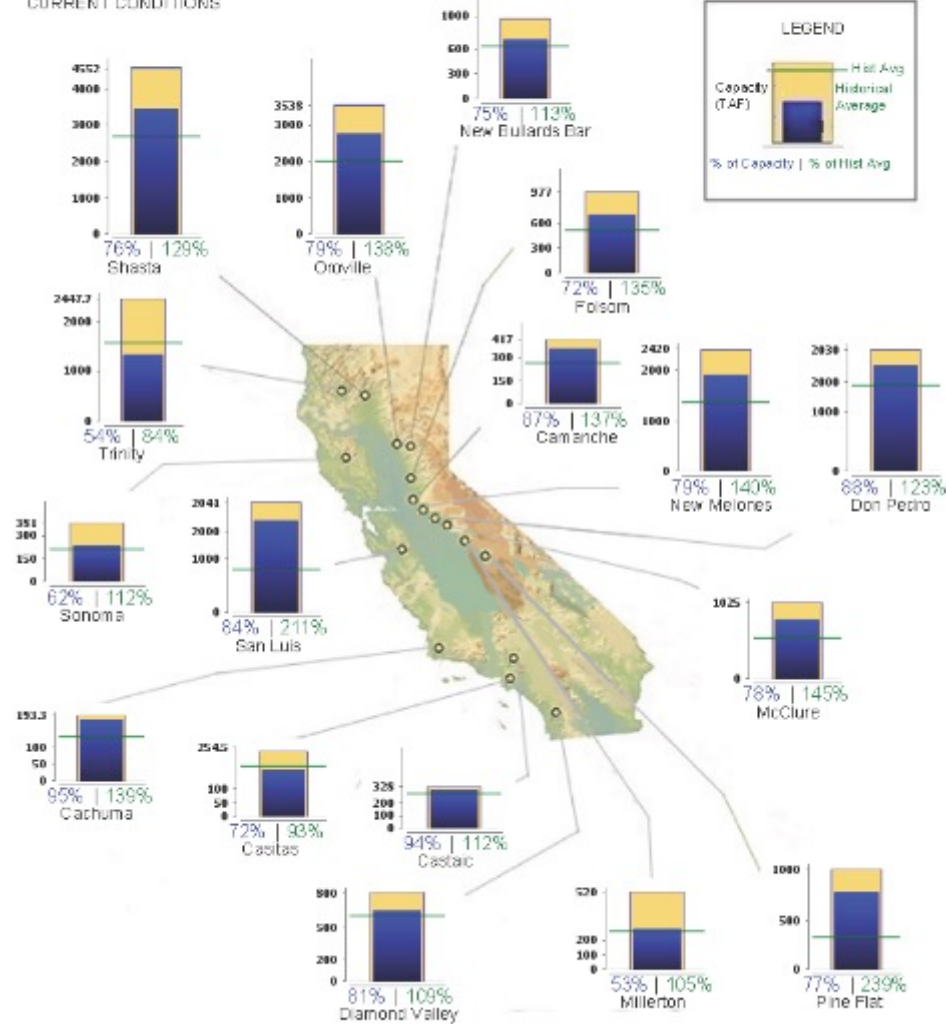


CURRENT RESERVOIR CONDITIONS

CALIFORNIA MAJOR WATER SUPPLY RESERVOIRS

Midnight - September 10, 2023

CURRENT CONDITIONS



Updated 09/11/2023 12:40 PM



BUREAU OF RECLAMATION

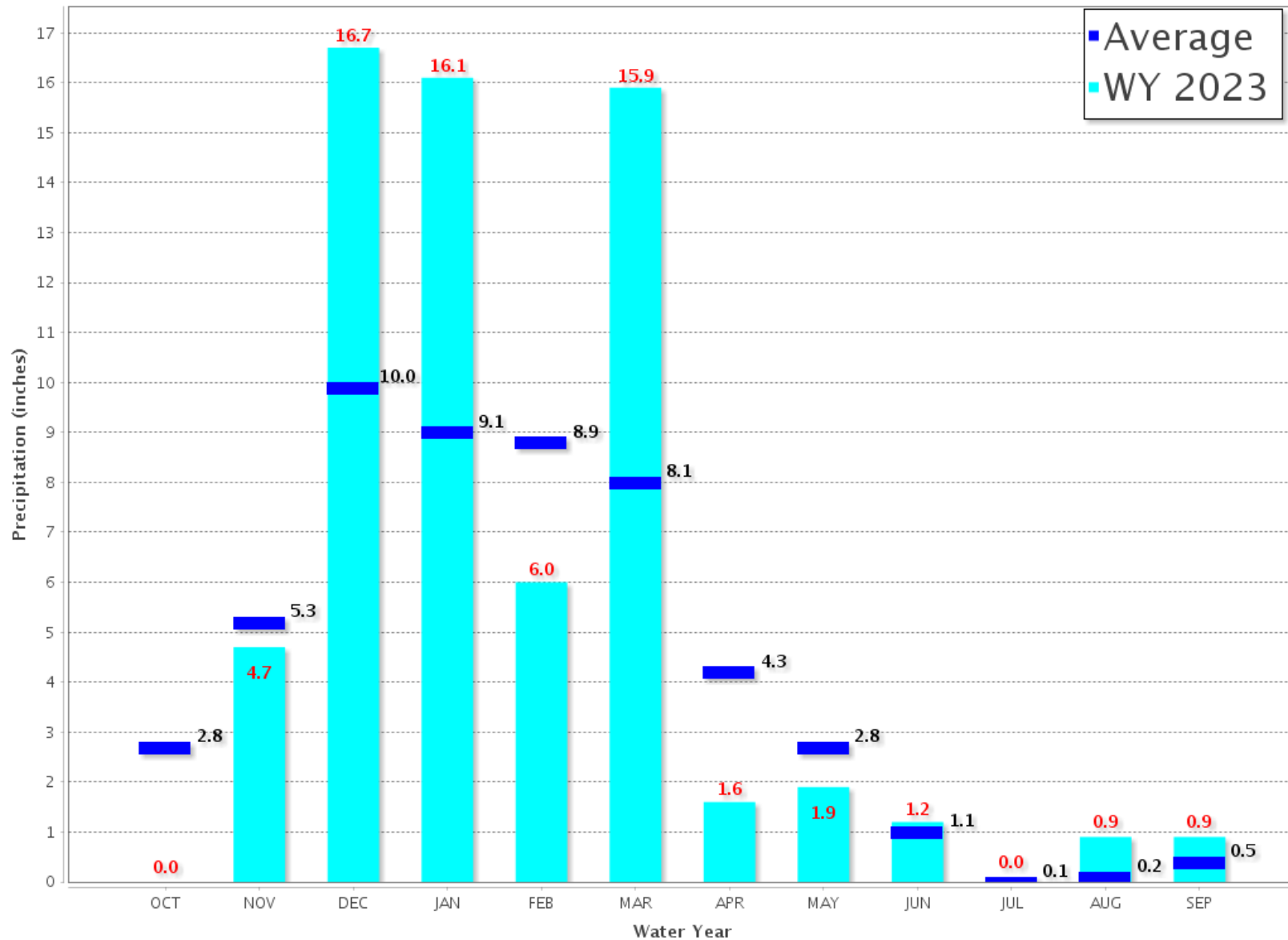


Northern Sierra 8-Station

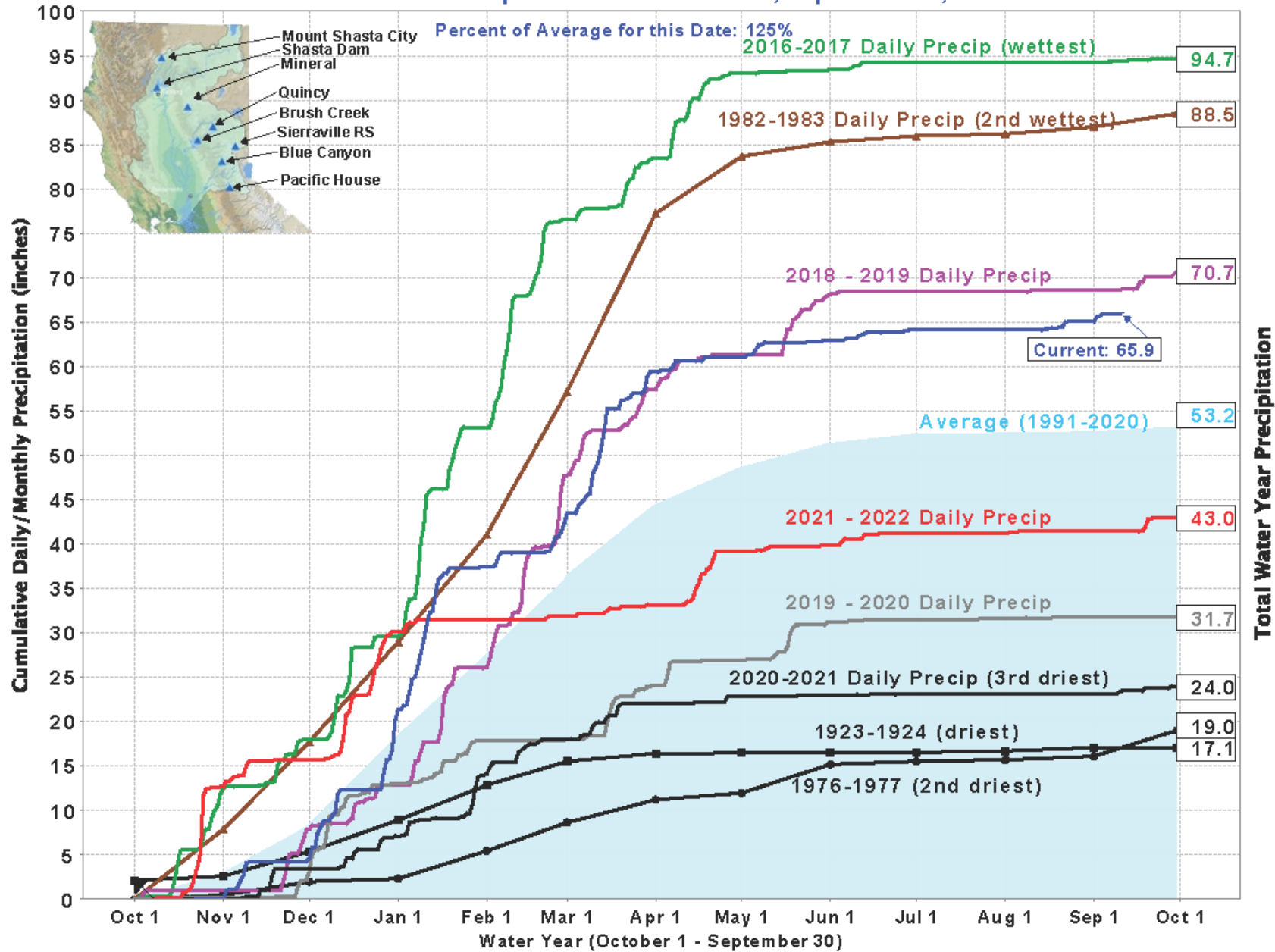
Precipitation Index for Water Year 2023 - Updated on September 11, 2023 12:48 PM

Note: Monthly totals may not add up to seasonal total because of rounding

Water Year Monthly totals are calculated based on Daily precipitation data from 12am to 12am PST



Northern Sierra Precipitation: 8-Station Index, September 11, 2023



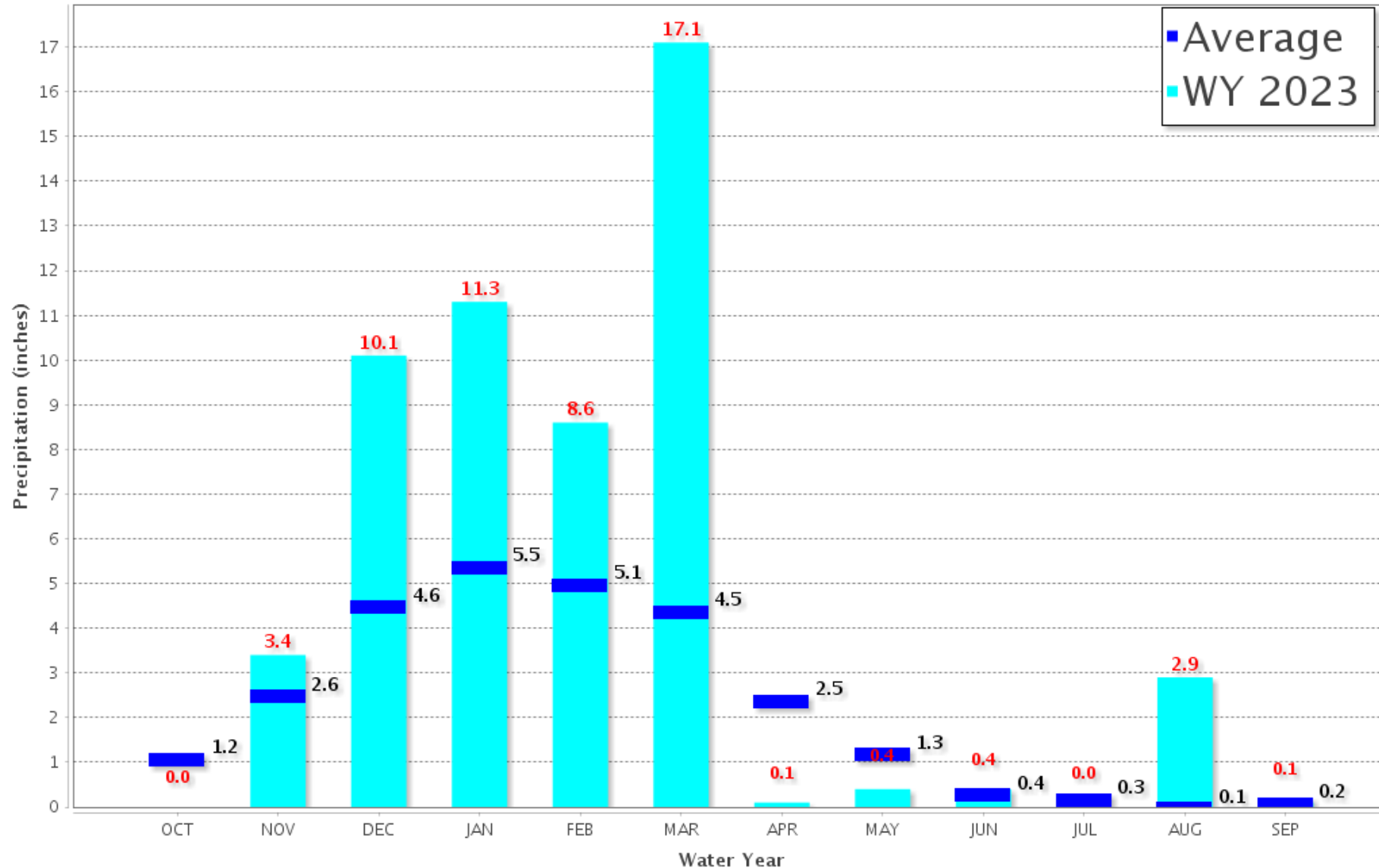


Tulare Basin 6-Station

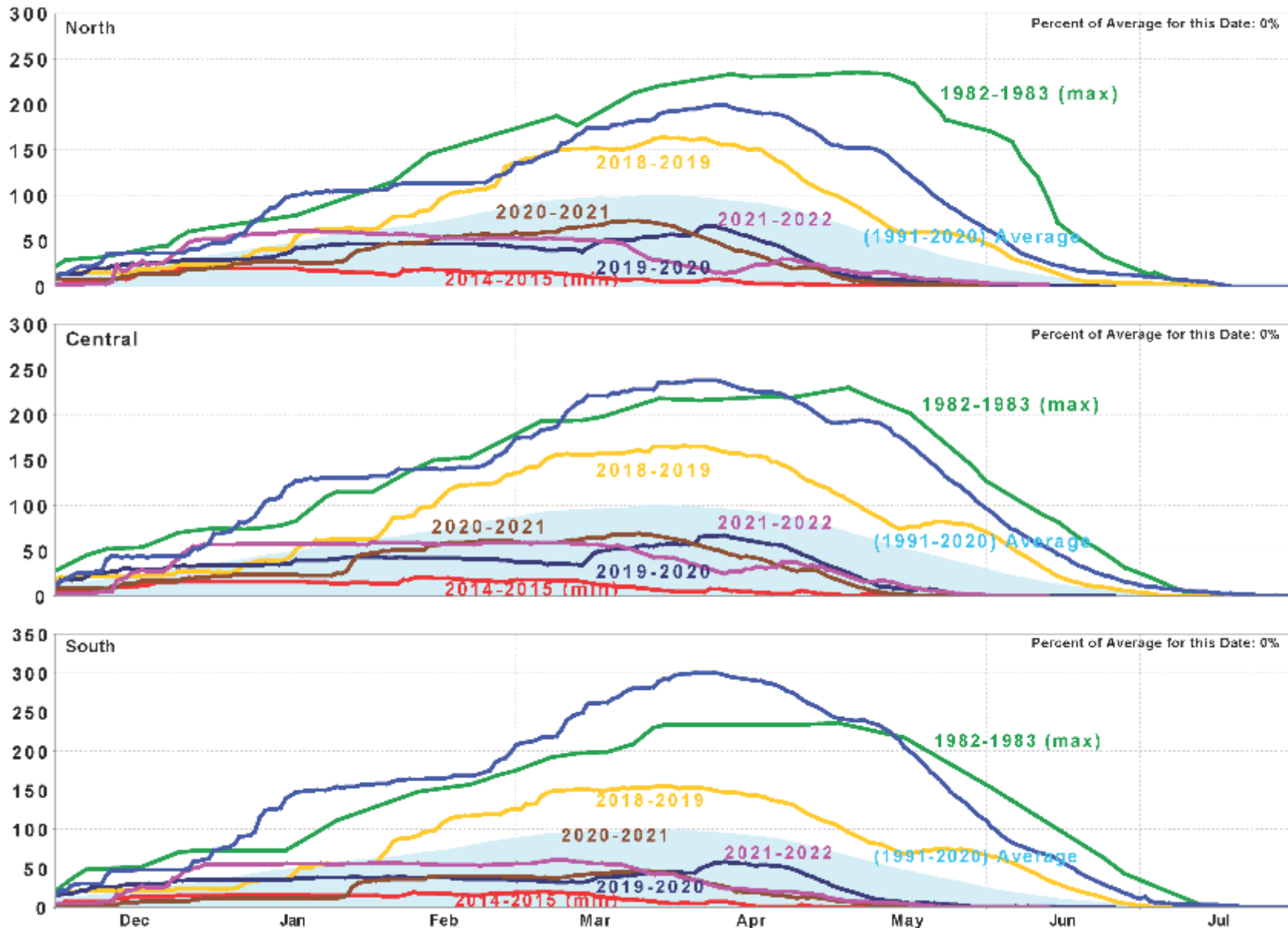
Precipitation Index for Water Year 2023 - Updated on September 11, 2023 12:48 PM

Note: Monthly totals may not add up to seasonal total because of rounding

Water Year Monthly totals are calculated based on Daily precipitation data from 12am to 12am PST



California Snow Water Content, July 31, 2023, Percent of April 1 Average



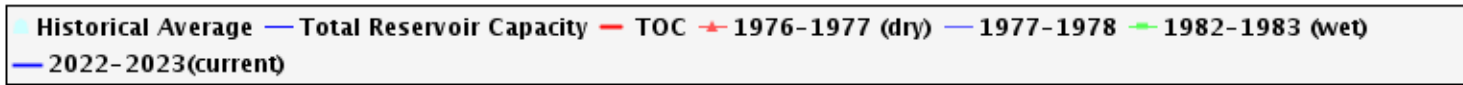
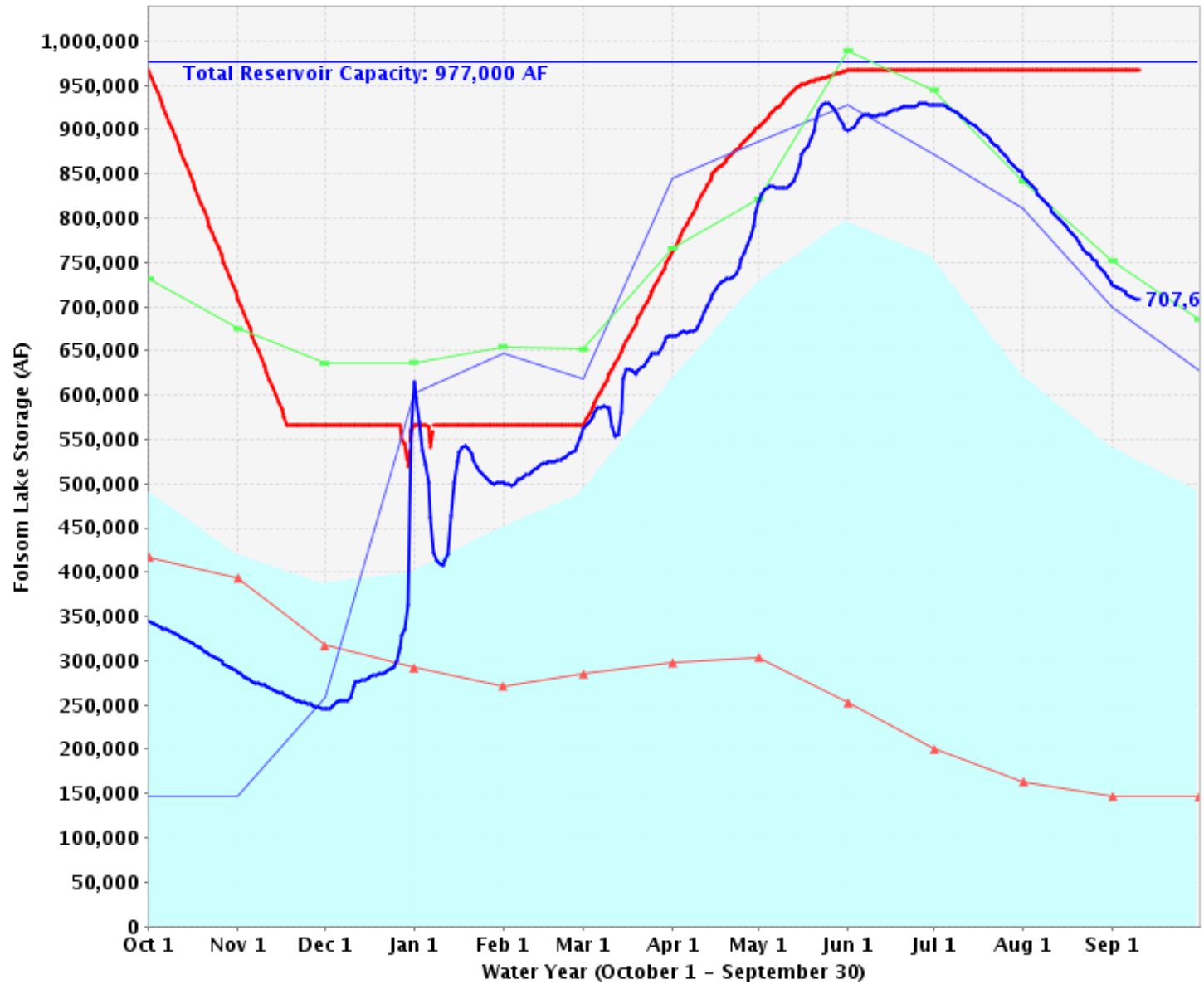
Statewide Percent of April 1: 0%

Statewide Percent of Average for Date: 0%



BUREAU OF RECLAMATION

Folsom Lake Storage Levels



2023 CVP Fall/Winter Ops

- Upstream Reservoirs
 - Continuing to reduce releases at Shasta, Folsom, and New Melones
 - Setting up for flood control limits in late fall
 - Temperature management October/November
- Delta
 - San Luis storage remains well above average
 - Continued CVP/SWP exports but are being managed to support salinity requirements

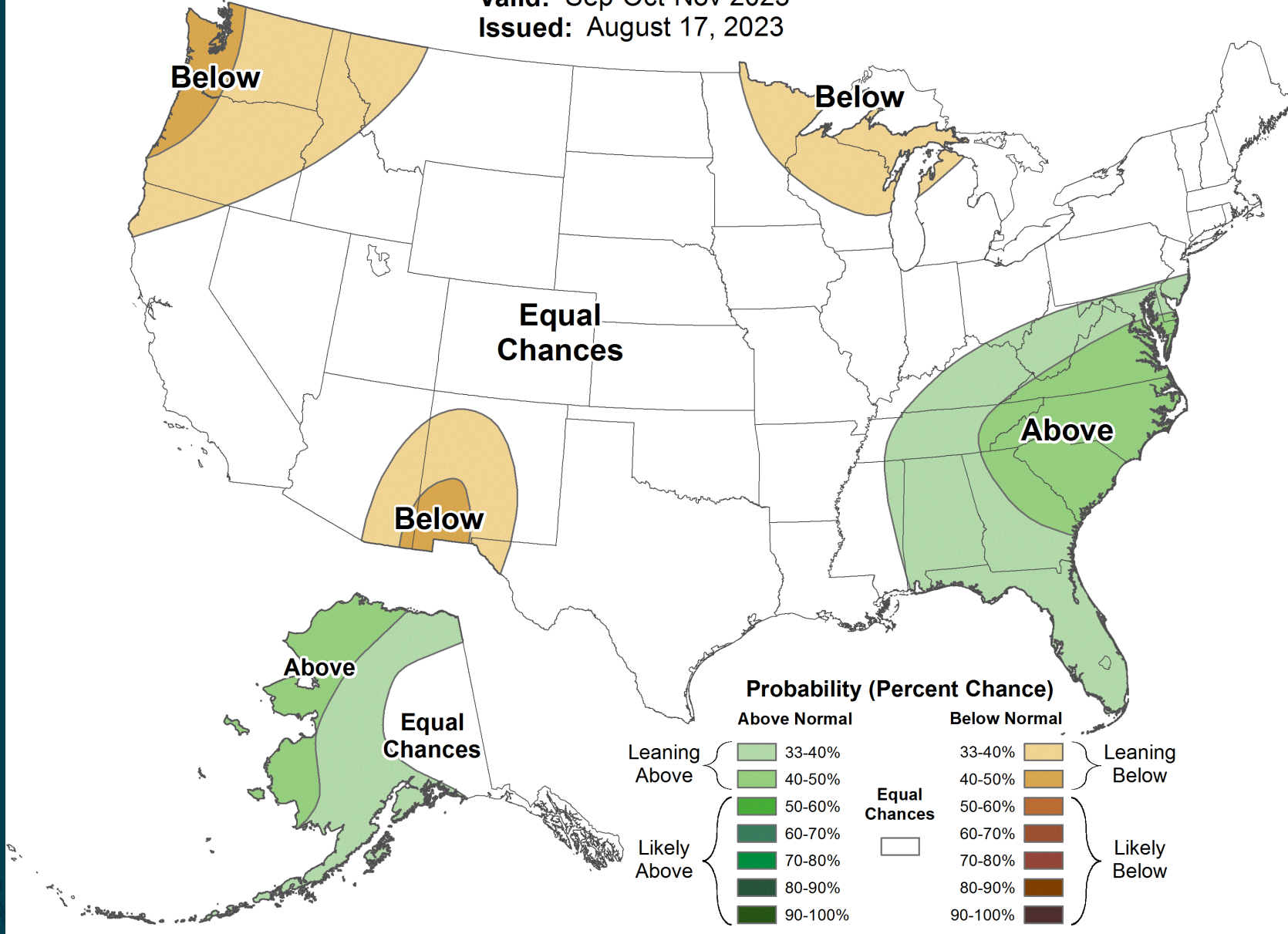


Seasonal Precipitation Outlook



Valid: Sep-Oct-Nov 2023

Issued: August 17, 2023



Water Forum 2.0 & LARTF Website



Jessica Law, Water Forum

Bank Protection Working Group & Technical Resource Advisory Committee

Gregg Ellis, ICF

Lower American River

Technical and Resource Advisory Committee (TRAC) Accomplishments

September 2023

LAR Accomplishments

- Lower American River Geomorphology Assessment, including identification of key river subreaches and segments (four subreaches and 60 segments were identified) within the leveed portion of the LAR,
- Hydraulic Modeling of the LAR,
- Erosion Risk Assessment and Expert Opinion Elicitation for all four LAR subreaches,
- Designation of Tier 1, 2, and 3 Segments for all four LAR subreaches,
- Identification of the Most At-Risk Subreach (Subreach 2),
- Detailed Erosion Assessment of Subreach 2,
- Natural Resource Assessment of Subreach 2,
- Development and Application of a Comprehensive Dashboard Tool for Evaluation Purposes, and
- Development and Assessment of Subreach 2 Conceptual Designs.

LAR Accomplishments

Segment 2 Site Designs

- Repair Site 2-1: RM 5.8 to 6.6 Left Bank
- Repair Site 2-2: RM 7.45 to 7.65 Right Bank
- Repair Site 2-3: RM 5.8 to 7.15 Right Bank

TRAC Contributions to Segments 1, 3 & 4

- Geomorphology Assessment
- Hydraulic Modeling
- Expert Opinion Elicitation process
- Designation of Tiers
- Interactive Conceptual Design Process
- Expert Review of Design Iterations

Path Forward

- TRAC will meet on an ad-hoc basis – as needed
- BPWG will meet approximately quarterly and receive updates, provide comment, etc...
- LAR Task Force will continue to be the overarching venue for engagement



Thank You to All for Your Contributions!!!



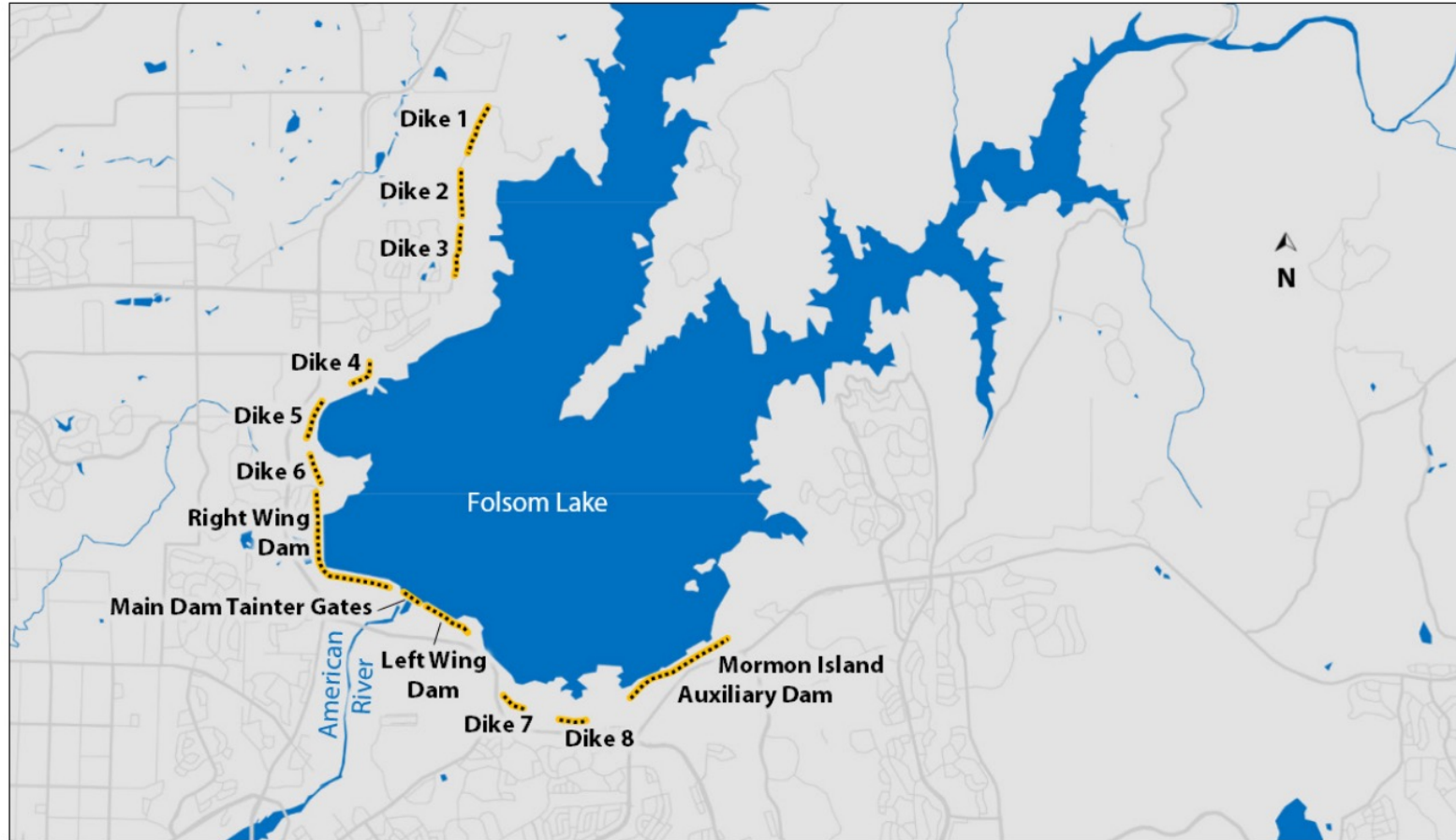
Q&A: River Conditions, Planning, and Management Updates

Opportunity for Task Force questions

Folsom Dam Raise Status

Reena Jawanda, SAFCA

American River Watershed Folsom Dam Raise



FDR Construction Update

| Contract | Package to Contracting | Award | Contractor |
|------------------------------|------------------------|----------|---|
| Main Dam/Left & Rt Wing Dams | 30Sept22 | 31Mar23 | Folsom Dam Constructors JV Shimmick and CEC |
| Dikes 1-6 | 03Mar23 | 01May23 | Maloney-Odin JV |
| MIAD | 18Apr23 | 12June23 | Ahtna-Great Lakes Environmental & Infrastructure JV |
| Dike 7 | 26Oct23 | 21Jun24 | |
| | | | |



Q&A: Upper Reach Updates

Opportunity for Task Force questions

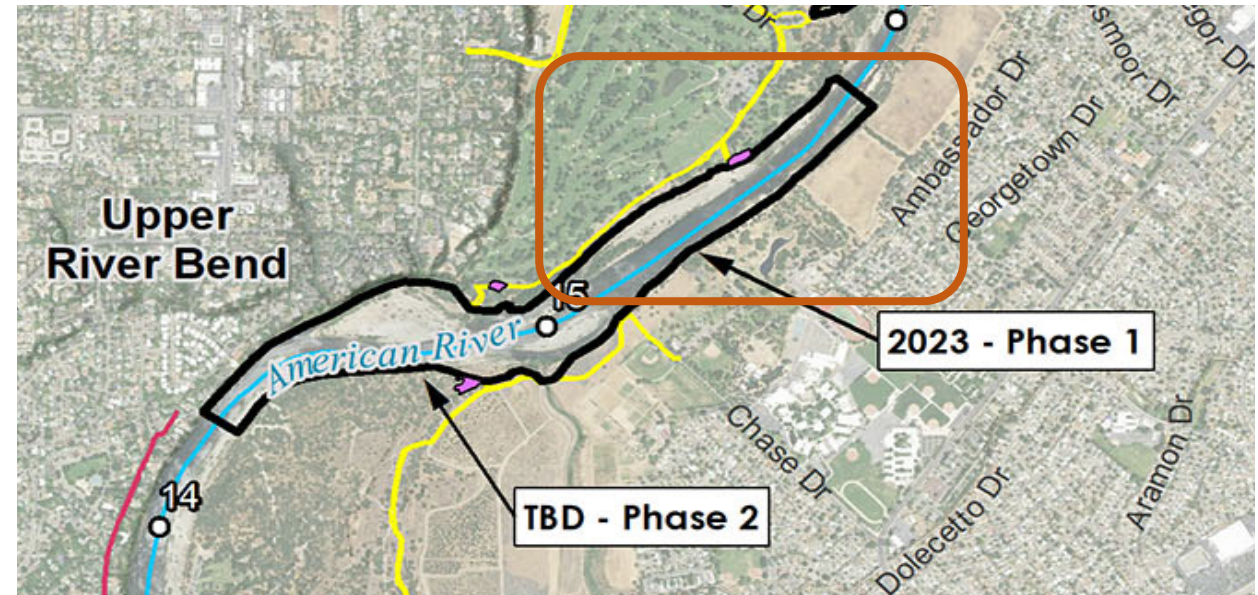
Upper River Bend Phase 1 Habitat Project

Erica Bishop, Water Forum

2023 Habitat Update

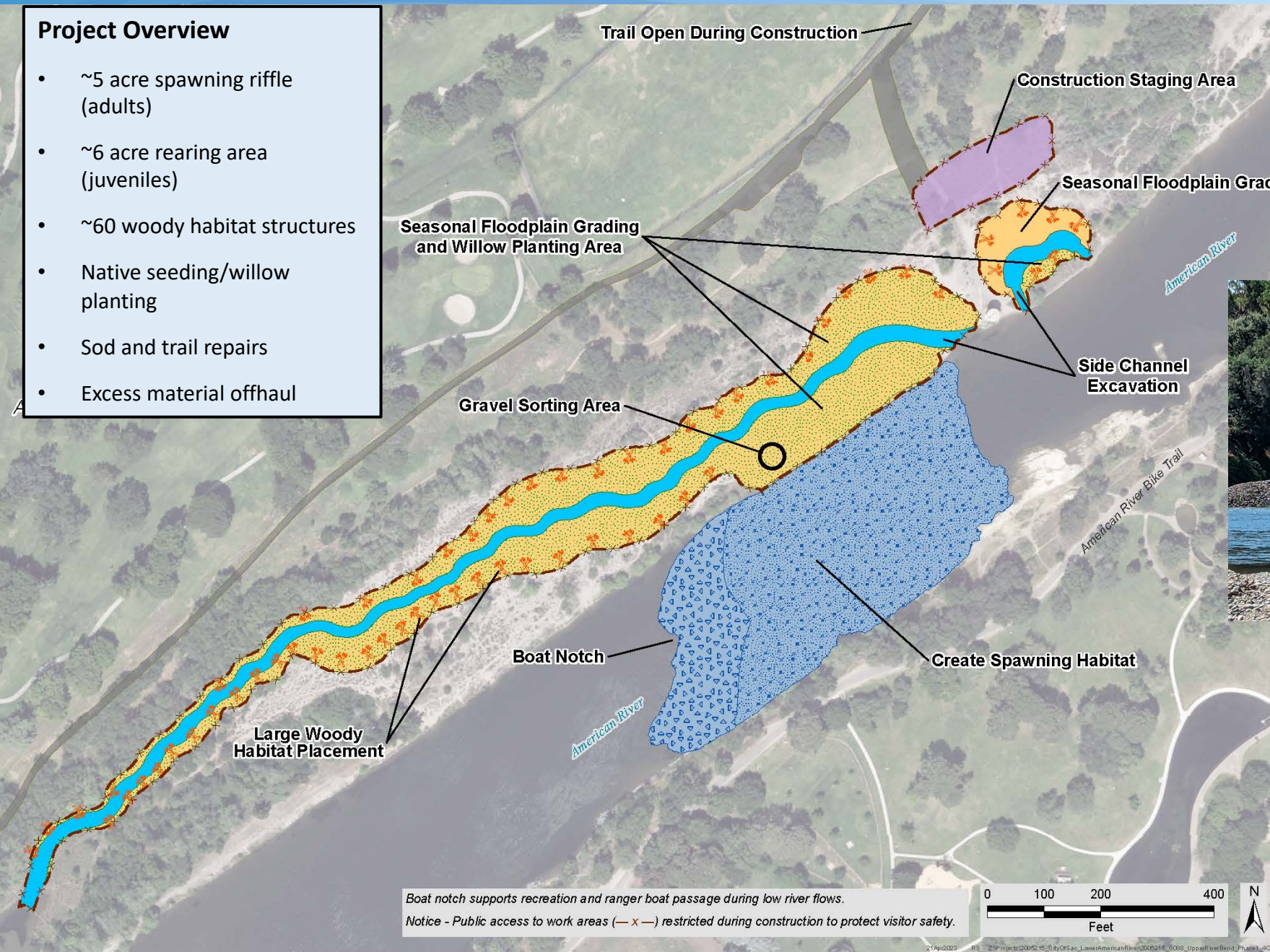
Upper River Bend Phase 1

- Duration: August 21st – late October
- Work hours Mon-Sat, 6 am-6 pm (noise after 7 am)
- In-river work weekdays only - no work Sunday/holidays
- River open to boating and fishing during construction
- *Regional Parks/Agency leadership weekly communications – during construction*



Project Overview

- ~5 acre spawning riffle (adults)
- ~6 acre rearing area (juveniles)
- ~60 woody habitat structures
- Native seeding/willow planting
- Sod and trail repairs
- Excess material offhaul



Boat notch supports recreation and ranger boat passage during low river flows.

Notice - Public access to work areas (— x —) restricted during construction to protect visitor safety.





QUESTIONS?

Contact: Erica Bishop, Program Manager

contact@waterforum.org

(916) 808-1997